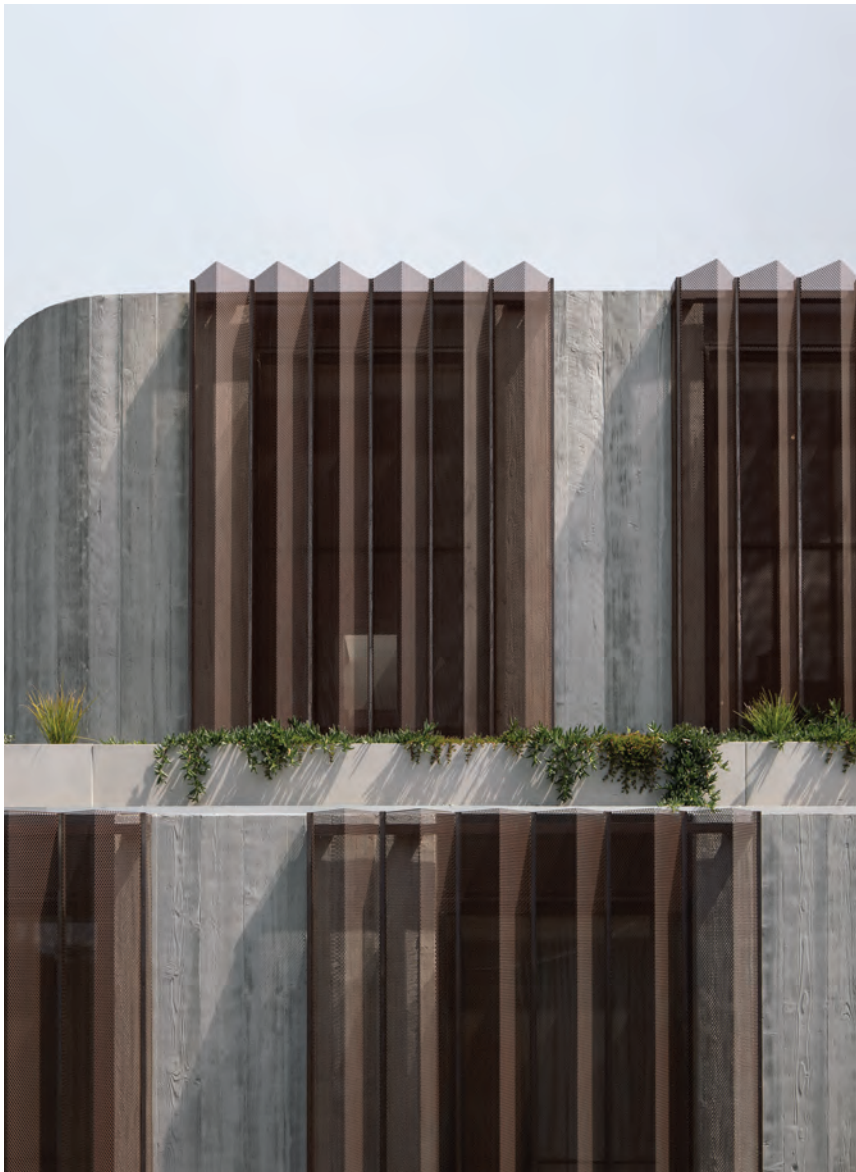


design anthology

INTERIORS / ART / ARCHITECTURE / TRAVEL



AUSTRALIA EDITION / ISSUE 05

HOME / AUCKLAND

Simple Pleasures



Located on clifftops at the end of Takapuna Beach in New Zealand, this compact building — which looks northeast across the main shipping channel into Auckland and towards the volcanic island of Rangitoto — shares its site with an earlier home built for the clients by the same design team of Seattle-based Lucas Interior and New Zealand-based Cheshire Architects.

Named The Folly, this addition to the main house sits across the lawn, a 90-square-metre structure wrapped in Corten steel and home to just one main interior room with an undercover outdoor terrace. Inside, concealed doors lead to a small kitchen and bathroom, and a bed folds out into a carefully defined room.

‘We were intrigued by the beautiful location and the fact that this is a garden structure to an existing home,’ says David Lucas, who worked on the project with his business partner and sister Suzie Lucas (their sister Rachel is the third co-founder of Lucas Interior). Over the last 20 years, the Lucases have worked on several projects with the homeowners, New Zealand natives who split their time between California and Auckland. With five grown children and several grandchildren, the couple dreamt of a space to accommodate their expanding family.

‘With this client, we speak the same language in terms of design, so it was a really rewarding experience to have the opportunity to work on something that wasn’t a traditional house but more of a space that could be flexible and

unexpected,’ says David. ‘They had a very specific aesthetic in mind. In contrast to the clean, modern main house, designed with stone, steel and glass, The Folly is a humble, rustic building in warm woods and rusted metals.’

The timber conveys the patina of time, and the rustic materials and colours are drawn from the natural surroundings. ‘The Folly is enlivened by its self-conscious reference to the informal corrugated iron shacks of the country’s early miners and gold prospectors,’ David explains. ‘We spent a great deal of time researching vernacular architecture. We wanted the interior to mesh with the simple, agrarian nature of the architecture and for the overall space to feel like it could have been repurposed rather than being a new construction.’

This same spirit is reflected in the choice of furnishings. ‘Rather than filling the space with all new decor, we curated a mix of copper objects, family heirlooms, funky chests and Japanese *tansu* cabinets and other vintage items,’ says Suzie, who selected elements that communicate a sense of age and history while harmonising with the contemporary context. One of the homeowner’s most prized possessions, a photograph of their grandparents standing on the porch of a similar style building when they first arrived in New Zealand from Scotland, is an invitation to contemplate and reflect with gratitude. ‘At its simplest, The Folly is a casual garden shed,’ says David. ‘It’s a place to stay and a place to sit under the trees and enjoy the sound and smell of the sea in front of a fire.’

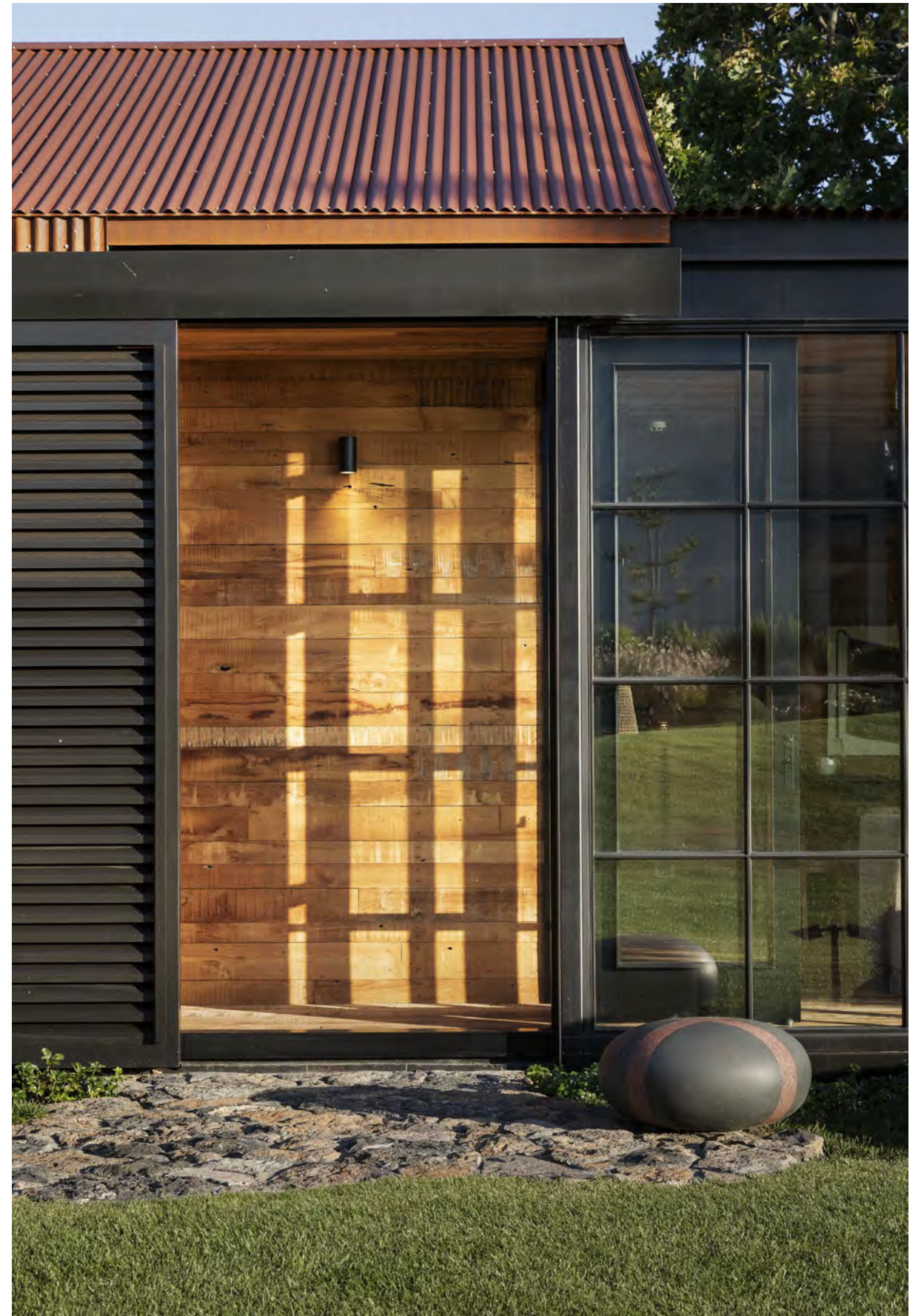
Text

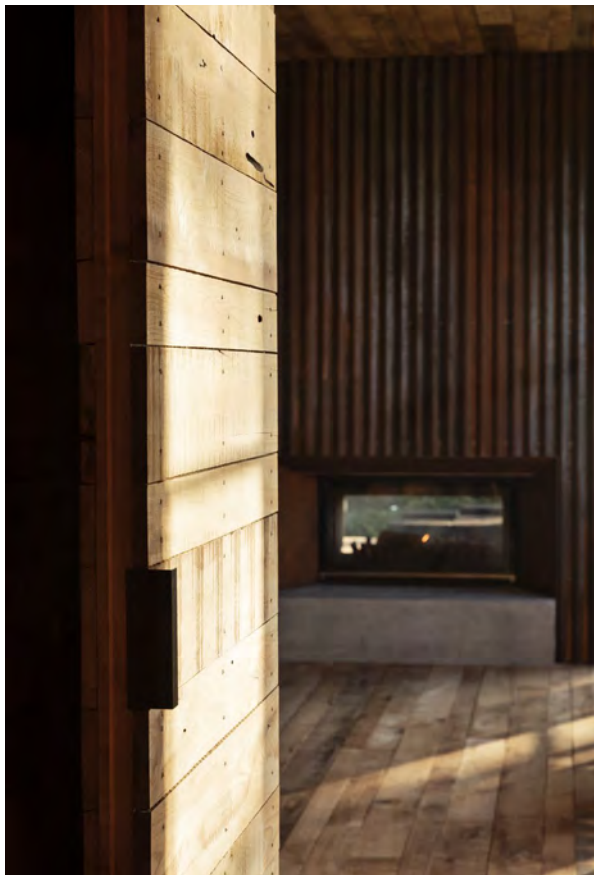
Karine Monié

Images

Sam Hartnett

Previous page and facing page
Conceived as a garden structure to an existing home on coastal clifftops, The Folly by Cheshire Architects and Seattle-based Lucas Interior is an intimate timber shed, entertaining space and guest quarters. Steel-framed doors reveal interior materials that enhance the agrarian nature of the architecture, which was inspired by the modest shed structures of New Zealand’s early miners and gold prospectors

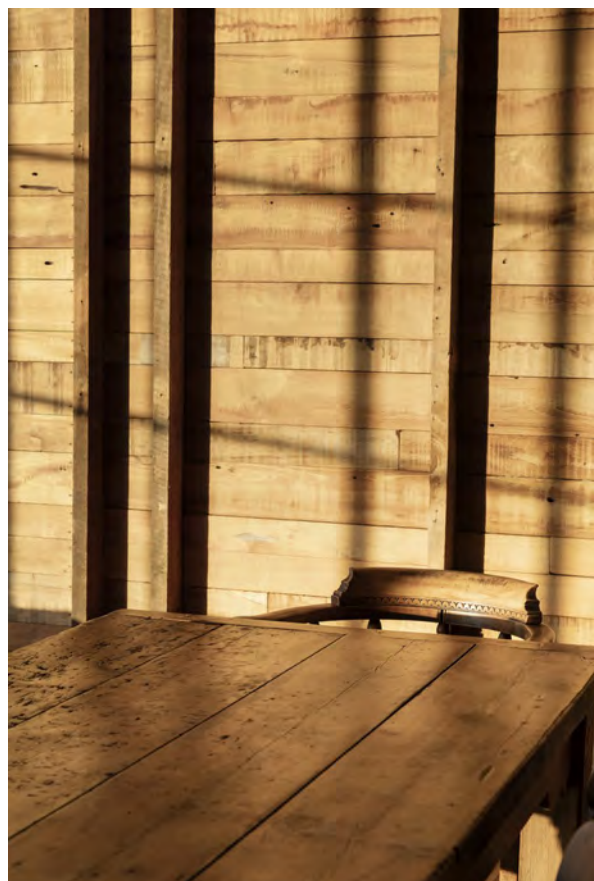




This page
The owners eschewed modern amenities in favour of a simple and convivial retreat where socialising takes place around the fireplace

Facing page
Custom leather window seats sit on both sides of the fireplace for enjoyment in both winter and summer. The furnishings are pieces the owners have accumulated over the years, including a side table from Cameroon and a Japanese *tansu* cabinet





Top left
The exposed wall framing is used to conceal doors to the kitchen, bathroom and pull-down bed

Top right
Rope lounge chairs and an antique chest are complemented by custom pieces like a leather ottoman by Bremich Cabinetmakers and new items such as pendants from Palecek

Bottom left
Grey marble elevates the rustic timber of the kitchen. A collection of copper objects accessorises the space and evokes a sense of history

Facing page
The cabin is oriented around one room that functions as a multipurpose space. The dining table and rope lounge chairs were sourced in Pakiri, while the dining chairs are by Bremich Cabinetmakers and the rattan pendant is another from Palecek





This page

The generous teak terrace is an inviting spot year round, made more so by the arrangement of burnt wood side tables by Bremich Cabinetmakers and teak and metal lounge chairs custom designed by Lucas Interior

Next page

Inspired by the traditional corrugated roof of a simple shack, the compact building is wrapped in hardy Corten steel juxtaposed against the wild surrounding garden

